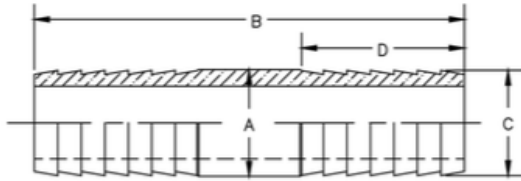


## Hose Mender

### Serrated Adapters Insert Couplings



| Pipe Size   | 1/2   | 3/4   | 1     | 1-1/4 | 1-1/2 | 2     | 2-1/2 | 3     | 4     |
|-------------|-------|-------|-------|-------|-------|-------|-------|-------|-------|
| Part Number | C-10  | C-20  | C-30  | C-40  | C-50  | C-60  | C-70  | C-80  | C-90  |
| A           | 0.675 | 0.840 | 1.075 | 1.525 | 2.162 | 2.162 | 2.505 | 3.100 | 4.060 |
| B           | 3.375 | 3.375 | 3.625 | 3.625 | 3.750 | 3.750 | 5.500 | 6.000 | 7.750 |
| C           | 0.645 | 0.845 | 1.075 | 1.405 | 1.640 | 2.095 | 2.505 | 3.100 | 4.060 |
| D           | 1.281 | 1.281 | 1.281 | 1.281 | 1.281 | 1.281 | 2.250 | 2.750 | 3.500 |

Material: ASTM A53 Steel pipe, ASTM B43 Red Brass

Notes: Use with Schedule 40 plastic pipe  
 Plastic pipe must be secured to Adapter with One or Two worm type hose clamps  
 Pressure Rating equals that of Plastic Pipe